

DIBAL

500 RANGE SCALES



WIND SERIES

WIND SERIES scales belong to **500 RANGE**, the new family of DIBAL scales, outstanding for design, technology and performance.



WIND MISTRAL TORNADO STAR

Capacities

- Mono-range (3.000 divisions):**
15 kg - 5g
30 kg - 10g
- Multi-range (3.000 divisions):**
6 kg - 2g # 15 kg - 5g
15 kg - 5g # 30 kg - 10g
- Mono-range (6.000 divisions):**
12 kg - 2g
30 kg - 5g

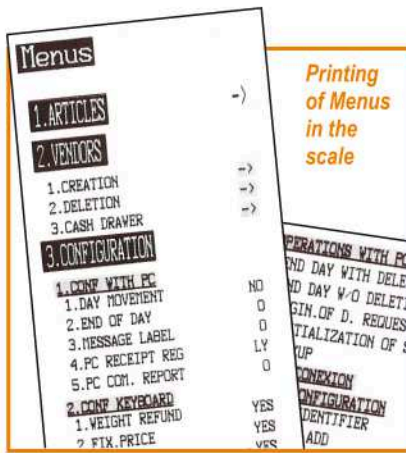
Display

- Segments display or graphic display.
- Both of them can show weight, price, total and tare, active vendors and name of the product.
- Additionally, graphic display can show logos, publicity, profitability codes (in vendor side) and allow to choose between 4 "screen designs".

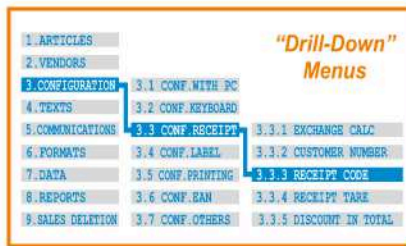


Segments display "Superlux"

Graphic display



Printing of Menus in the scale



"Drill-Down" Menu

Amazing functionality

- Depending on model, WIND SERIES scales are supplied with up to 5.000 PLUS, up to 45 preset keys and up to 10 vendors (see table of models).
- Complete information for each PLU:**
 - Regular price.
 - Price by weight segments and per kg/100 g (W-020 and W-025).
 - 2 names of 20 characters (1 name in W-010 and W-015).
 - 10 free texts of 24 characters (5 texts in W-010 and W-015).
 - 1 text of 1.024 characters (W-025).
 - Profitability code.
- Sales and management reports:** sales (by article, vendor, time slots, last month,...), margins, cash drawer report, last modified PLUs,...
- Fast and reliable communications** among scales, PC and mobile devices including new DWS (Dibal Web Server).

Easy programming and operation

- WIND SERIES scales have been designed thinking on the needs of users and service departments:
 - "Drill-Down" Menus.
 - Menus can be printed in the scale.
 - Special keys for direct access to programming menus: change a price, include a new PLU or vendor, sales reports,...
 - Direct access to 999 PLUs from keyboard.
 - Search of PLUs by number (W-020 and W-025).
 - Search of PLUs by name (W-020 and W-025): typing the initial characters of the name, the display shows the matching items.
 - 2 programmable "Macros" (W-020 and W-025): recording of a sequence of keys, to create a "shortcut" to any task: change of batch number, access to programming parameters, receipt reopening, reports, etc.
 - Security: configurable password system.



Direct access to 999 PLUs



Direct keys to programming menus

Stocks management in the scale

- Entry of initial stock.
- Register of sales, deducted from stock.
- Display and print reports of stock by PLU.
- Adjustment of stock after physical inventory.
- Information can be sent to PC.

Table of Models

MODEL	FORMAT		DISPLAY		TOTAL PLUs	PLUs			PRINTER		SPEED maximum (mm/second)	INTER-CONNECTION (ETHERNET) Nº SCALES	COMMUNICATIONS				BATTERY	
	FLAT (F)	POLE (P)	SEGMENTS LCD	GRAPHIC L LCD		DIRECT PLUs	MACROS	VENDORS	PAPER TYPE	ETHERNET TCP/IP			WI-FI IEEE 802.11	HOMEPLUG	SCANNER	CASH DRAWER	HIGH CAPACITY + EXTERNAL BAT. CONN.	ANTI BLACK-OUT + EXTERNAL BAT. CONN.
W-010	•	•	•		2.000	45x2 + 4x2*	-	5	Receipt	80	5	•	OPT.	OPT.	•		OPT.	
W-010 B	•	•	•		2.000	45x2 + 4x2*	-	5	Receipt	60	5	•	OPT.		•	•		
W-015	•	•	•		2.000	45x2 + 4x2*	-	5	Label or Receipt	80	5	•	OPT.	OPT.	•		OPT.	
W-020	•	•	•	OPT.	5.000	40x2 + 9x2*	2	10	Receipt	100	10	•	OPT.	OPT.	•	•	OPT.	
W-020 B	•	•	•	OPT.	5.000	40x2 + 9x2*	2	10	Receipt	60	10	•	OPT.		•	•		
W-025	•	•	•	OPT.	5.000	40x2 + 9x2*	2	10	Label or Receipt	100	10	•	OPT.	OPT.	•	•	OPT.	

OPT. = Optional. * Using Shift and Vendor keys.

Printing

- **High resolution (2", 54 mm) and fast printer: up to 100 mm/second** (80 mm/s in W-010/W-015 and 60 mm/s in "B" models with internal battery).
- **Receipts:**
 - Up to 40 lines.
 - 2 fixed formats + 1 programmable (W-020/W-025). (only 2 fixed formats in W-010 and W-015 models)
 - 4 logos per receipt (W-020 and W-025).
 - Vendor's name (W-020 and W-025).
 - 9 payment modes.
 - Total in €, old national currency and 2 additional currencies.
 - Discounts on line and total.
 - Clients on account (W-020 and W-025).
- **Labels:**
 - 20 fixed formats + 10 programmable (W-025). (20 fixed + 5 programmable in W-015)
 - From 30x30 up to 60x100 mm (W-025). (up to 60x80 mm in W-015)
 - 40 logos.
 - 40 fields of information.
 - 100 programmable texts.
 - Manual and automatic pre-packing modes.
 - 3 levels of totals (W-025).
 - Printing of a preset number of copies (W-025).
 - Printing with 90°-180°-270° rotation (W-025).
 - "Opto" automatic adjustment for paper detection.
 - Global expiration date (W-025).
 - Alphanumerical batch (W-025).

Butcher's shop DIBAL

21/MAY/13 10:58 OP:00001

Art	ks	€/ks	€
1	TURKEY BREAST	1.180	2.40
		-10%	- 0.28
2	SIRLOIN STEAK	0.795	16.30
3	GOUDA CHEESE	0.510	8.75
TOTAL (3)			19.97
V.A.T.	7.00%		1.40
V.A.T.	4.00%		0.80
TENDERED CHANGE			20.00

2 500015 019977

WEEKLY OFFER

VEAL SIRLOIN 12,71 €/Kg

THANK YOU FOR YOUR VISIT

Att. by: STEVE WHITLAND

Fruit Shop DIBAL

RASPBERRY

Pack date 12.07.2012 Batch number 124247

Sell-by date 19.07.2012

€/kg	Weight kg
11,60	0,280
TOTAL EURO	
3,25	

2 000022 003254

Easy maintenance

- **Local/remote, with/without assistance.**
- **Internal firmware updateable from PC.**
- **On line checking and modification of technical parameters**, by means of optional DWS (Dibal Web Server).

Power supply - Rech. Batteries

- **Mains:** 110 or 230 VDC.
- **"Anti black-out" battery**, optional depending on models.
- **"B" models**, with long lasting **internal rechargeable battery**: up to **36 hours**. (calculated for 1.000 receipts, 3 articles per receipt).*
- Optional **external battery** connector.

* With segments display and backlight off. Load and range of rechargeable batteries can vary substantially depending on temperature, age and general state of batteries, printing frequency, networking, etc.

Barcodes

- **WIND SERIES** scales can print in both receipts and labels **EAN-13** and **GS1 DataBar** barcodes.
- Moreover, W-020 and W-025 models also allow the **connection of a scanner, powered by the scale (5 VDC)**, to read these barcodes.



Generic traceability (labels)

- Including **EU Bovine Meat Regulations**.
- **2 types of generic traceability** (for meat, fish, fruits, vegetables,...) and **up to 20 products** in W-025 (1 type and up to 10 products in W-015).

Fiscal mode (dep. on countries)

- With this option activated, the scale will keep a **full copy of all receipts printed**, allows printing a list of them and keeps **consecutive numbers of receipts** throughout the fiscal period.

Formats and Dimensions

□ **Flat,**
with receipt printer or label/receipt printer.

Plate: 360 x 265

Dimensions: 365 x 160 x 440 mm

□ **Pole,**
with receipt printer or label/receipt printer.

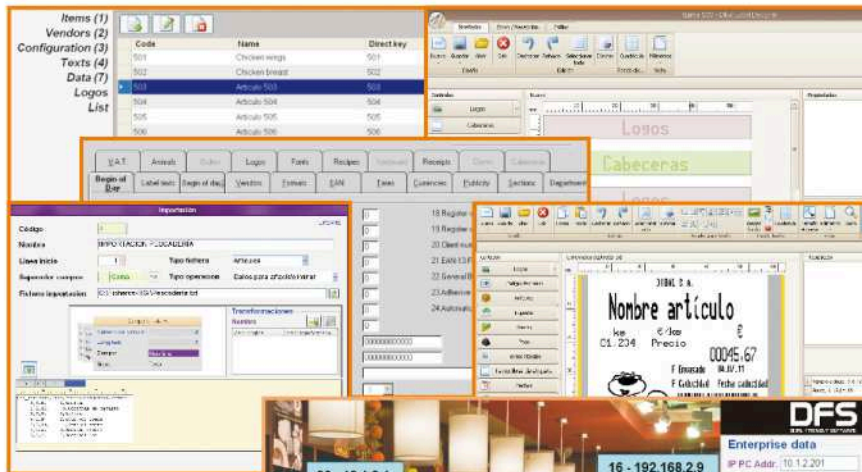
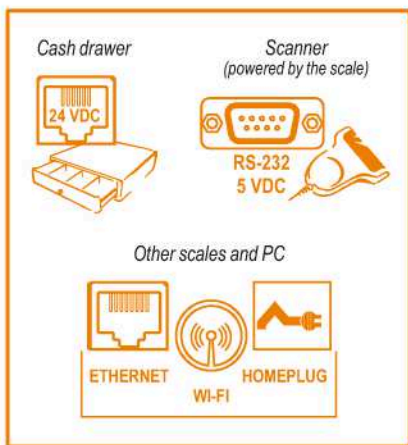
Plate: 360 x 265

Dimensions: 365 x 440 x 530 mm

Dimensions in mm.

Communications

- **Interconnection and computer connection** of scales based on **ETHERNET TCP/IP**, as standard, and **Wi-Fi (802.11)** or **Homeplug**, as an option.
- In Wi-Fi communications, **Access Point is not needed**, as the Wi-Fi internal module of scales can be configured as Access Point.
- **Interconnection** of up to **10 scales** per section (5 in W-010 and W-015 models), on "master + slaves" or "master + submaster + slaves" configuration.



PC Software

- Several **applications** are available, running on **Windows**, to connect **WIND SERIES** scales to PC:

RMS: Retail Management Software
DLD: Dibal Label Designer

- **RMS+DLD**: programming the scales, design labels/receipts (DLD) and **commercial management** of data received from scales (lists, invoices, warehouses, customers, offers, etc).

DFS: Dibal Friendly Software
DLD: Dibal Label Designer

- **DFS+DLD**: programming the scales, design labels/receipts (DLD) and reception of data with fully configurable lists. It stands out for its **ease of use, speed of communication and simultaneous connection with all scales.**

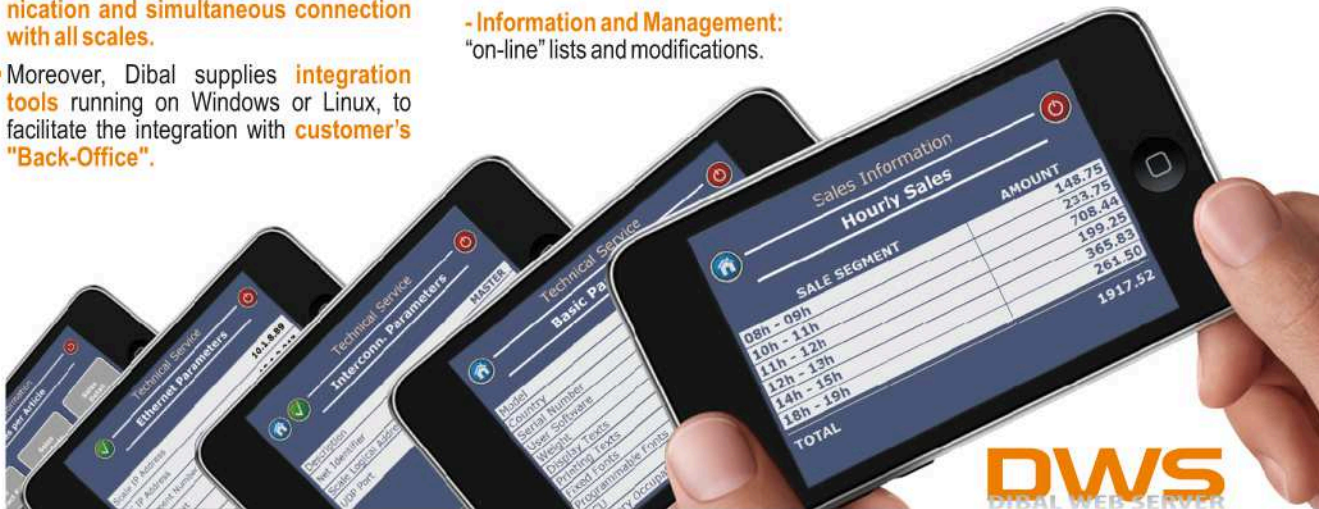
- Moreover, Dibal supplies **integration tools** running on Windows or Linux, to facilitate the integration with **customer's "Back-Office"**.

RMS
DLD
DFS



Web Server

- **WIND SERIES** scales can incorporate **DIBAL WEB SERVER (DWS) embedded**, allowing access to each scale -through the IP address- from any computer or mobile device (smartphone, tablet,...) with web browser. Access is protected by several levels of passwords.
- Thanks to **DWS**, many **parameters** of the scale can be remotely **checked and/or modified**:
 - **Technical Service**: consult and modification of technical parameters.
 - **Sales Information**: consult of total and detailed sales.
 - **Information and Management**: "on-line" lists and modifications.



DWS
 DIBAL WEB SERVER