

DIBAL

500 RANGE SCALES



STAR SERIES

- **STAR SERIES** scales belong to **500 RANGE**, the new family of DIBAL scales, outstanding for design, technology and performance.



Capacities

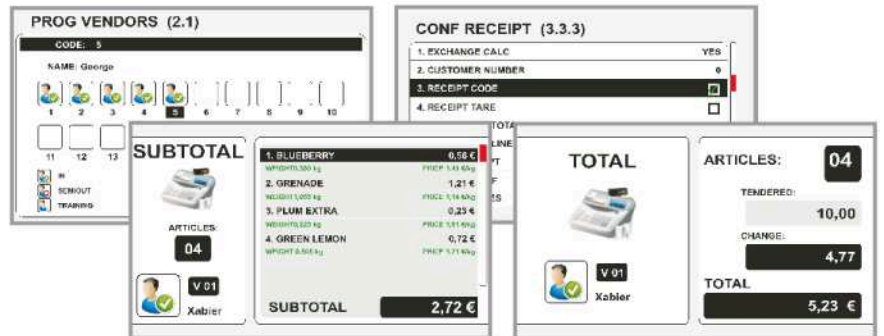
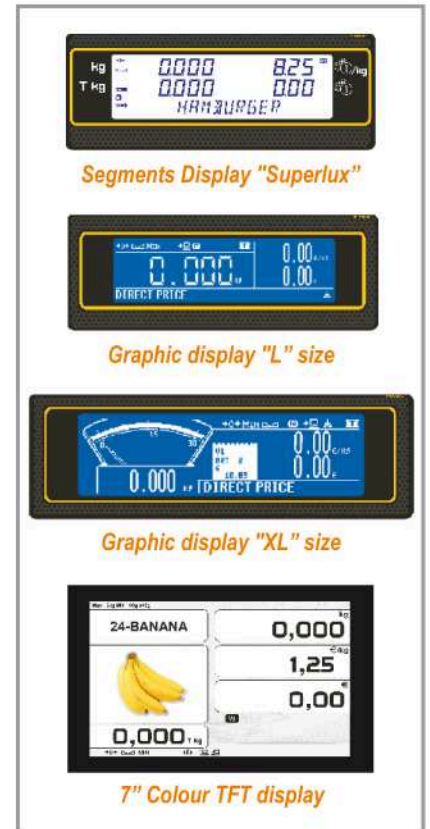
- **Mono-range (3.000 divisions):**
15 kg - 5 g
30 kg - 10 g
- **Multi-range (3.000 divisions):**
6 kg - 2 g # 15 kg - 5 g
15 kg - 5 g # 30 kg - 10 g
- **Mono-range (6.000 divisions):**
12 kg - 2 g
30 kg - 5 g

Amazing functionality

- **10.000 PLUS, 20 vendors and up to 95 preset keys** (see table of models).
- **Complete information for each PLU:**
 - Regular and offer price.
 - Price by weight segments and per kg/100 g.
 - 3 names of 20 characters.
 - 20 free texts of 24 characters.
 - 1 text of 1.024 characters (S-545, S-547).
 - Profitability code.
- **Sales and management reports:** sales (by article, vendor, time slots, last month,...), margins, cash drawer report, last modified PLUs,...
- **Fast and reliable communications** among scales, PC and mobile devices including new **DWS (Dibal Web Server)**.

Display

- **STAR SERIES** scales offer a choice of **4 different displays**. All of them can show weight, price, total and tare, active vendors and name of the product.
- **Graphic displays** can also show logos, profitability codes and warning messages (in vendor side), publicity with templates system and special dynamic effects,... and allow the users to choose between **4 different "screen designs"** the one that best suits their needs.
- Further, **Double Body, Pole** and **Hanging stainless steel** format scales can incorporate, as an option, **high resolution 7" COLOUR TFT, both in vendor's and buyer's side**.
- **Colour display** allows to show **pictures of products** during sales operations, as well as **advertising images** when the scale is not operating.
- The selection of advertising images and the order of showing can be established through optional Dibal DFS application or **directly at the scale**.



COLOUR display. Examples of sales and configuration screens



Printing

- **High resolution (2", 54 mm) and fast printer: up to 100 mm/second.** (60 mm/s in S-540 B model with internal rechargeable battery).
- **Receipts:**
 - Up to 75 lines.
 - 2 fixed and 2 programmable formats.
 - 4 logos per receipt.
 - Vendor's name.
 - 9 payment modes.
 - Total in €, old national currency and 2 additional currencies.
 - Discounts on line and total.
 - Loyalty points.
 - Clients on account.
 - Recipes.
- **Labels:**
 - 20 fixed and 40 programmable formats.
 - From 30x30 up to 60x150 mm.
 - 100 logos.
 - 60 fields of information.
 - 100 programmable texts.
 - Manual and automatic pre-packing modes.
 - 3 levels of totals.
 - Printing of a preset number of label copies.
 - Printing with 90°, 180° and 270° rotation.
 - "Opto" automatic adjustment for paper detection.
 - Labelling between a minimum and maximum weight previously established (checkweigher).
 - Global expiration date.
 - Alphanumerical batch.

Butcher's shop DIBAL

21/MAY/11 10:58 OP:00001

Art	kg	€/kg	€
1	TURKEY BREAST		
	1.180	2.40	2.83
		-10%	- 0.28
2	SIRLOIN STEAK		
	0.795	16.30	12.96
3	GOUDA CHEESE		
	0.510	8.75	4.46
TOTAL (3)			19.97
V.A.T. 7.00%			1.00
V.A.T. 4.00%			0.10
TENDERED CHANGE			20.00
			0.00

2 500015 019977

WEEKLY OFFER

VEAL SIRLOIN 12,71 €/Kg

THANK YOU FOR YOUR VISIT

Loyalty points: 9

Att. by: STEVE WHITLAND



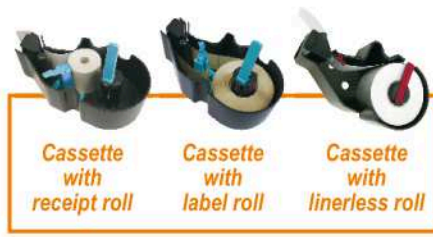
Barcodes

- **STAR SERIES** scales can print in both receipts and labels **EAN-13, GS1 DataBar and EAN-128** barcodes.
- Moreover, they also allow the **connection of a scanner, powered by the scale (5VDC)**, to read these barcodes.



Cassette (label printer)

- Immediate change of paper roll, featuring a **cassette**.
- **Linerless (adhesive paper rolls without backpaper):**
 - S-545 and S-547 models can be supplied with "linerless" option, to print adhesive labels or receipts without backpaper.
 - Linerless system benefits our environment, as there is no backpaper waste.



- Scales with linerless option can print labels of variable length -with no waste of paper- or adhesive receipts (that can be used, for example, to close the customer bag).
- They can also print conventional receipts or labels, simply changing the cassette and operation mode.

Generic traceability (labels)

- Including **EU Bovine Meat Regulations**.
- **10 types of generic traceability** (for meat, fish, fruits, vegetables,...) and **up to 99 products**.



Formats

□ Flat, with label/receipt printer.

□ Pole, with label/receipt printer.



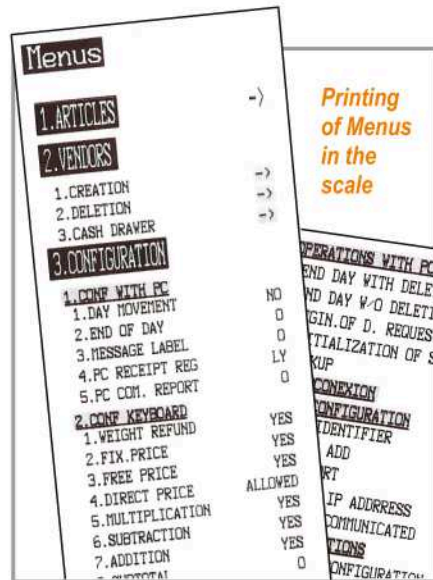
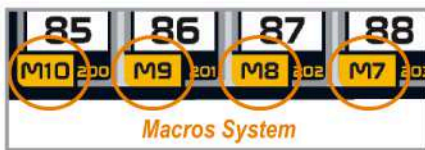
Easy programming and operation

STAR SERIES scales have been designed thinking on the needs of **users** and **service departments**:

- "Drill-Down" Menus.
- **Menus can be printed** in the scale.
- **Special keys for direct access to programming menus**: change a price, include a new PLU or vendor, sales reports,...
- **Direct access to 999 PLUs from keyboard**.
- **Search of PLUs by number**.
- **Search of PLUs by name**: typing the initial characters of the name, the display shows the matching items.
- **Programmable "Macros" system**: recording of a sequence of keys, to create a "shortcut" to any task: change of batch number, access to programming parameters, receipt reopening, reports, etc.

Depending on format, STAR SERIES scales have as many macros available as direct PLU keys, and 10 specific macro keys.

- **Security**: configurable password system.

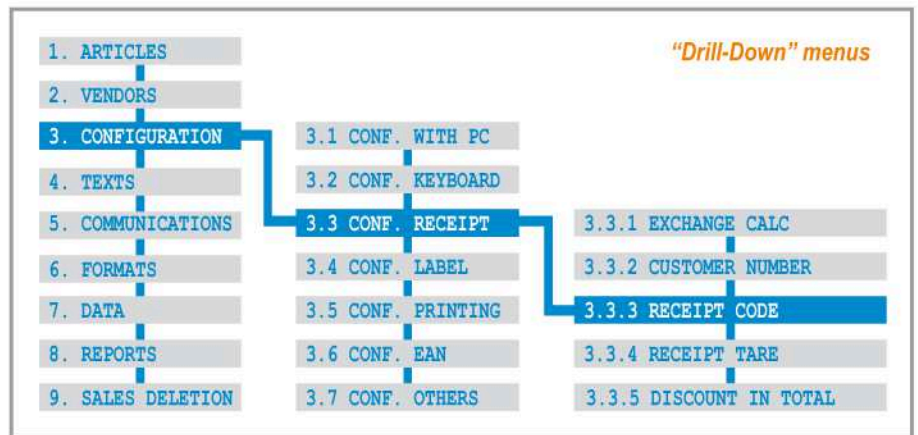


Fiscal mode (dep. on countries)

When this option is activated, the scale will keep a **full copy of all receipts printed**, allows printing a list of them and keeps **consecutive numbers of receipts** throughout the fiscal period.

Stocks management in the scale

- **Entry** of initial stock.
- **Register of sales**, deducted from stock.
- Display and print **reports of stock by PLU**.
- **Adjustment of stock** after physical inventory.
- **Information can be sent to PC**.

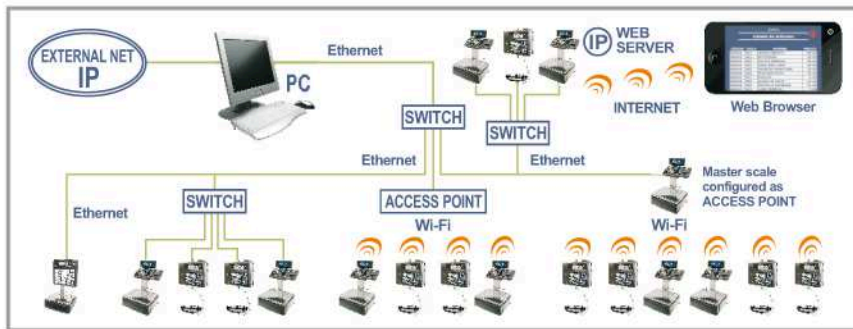
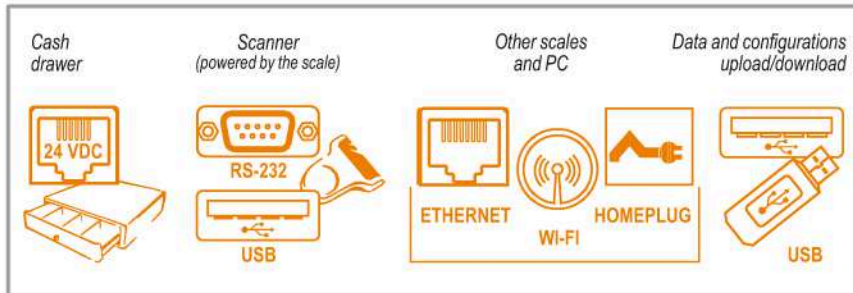


Double Body, with receipt printer, label/receipt printer or 2 printers: receipts + labels.

Hanging ABS, with receipt printer, label/receipt printer or 2 printers: receipts + labels.

Communications

- **Interconnection and computer connection** of scales based on **Ethernet TCP/IP**, as standard, and **Wireless (Wi-Fi IEEE802.11) or Homeplug**, as an option.
- In Wi-Fi communications, **Access Point is not needed**, as the Wi-Fi internal module of scales can be configured as Access Point.
- **Interconnection** of scales, up to 16 per section, operates on a "master + slaves" or "master + submaster + slaves" configuration.
- **USB Port**: it allows to connect an external memory device, for copy or restore data and configurations of the scale, and dump sales data.



Easy maintenance

- **Local/remote, with/without assistance.**
- **Internal firmware updateable from PC.**
- **On line checking and modification of technical parameters**, by means of optional DWS (Dibal Web Server).
- Access to all non metrological components of the scales **without breaking metrological seals.**

Power supply - Rech. Batteries

- **Mains: 110 or 230 VDC.**
- **"Anti black-out" battery**, optional depending on models.
- **S-540 B model**, with long lasting **internal rechargeable battery**: up to **52 hours**. (calculated for 1.500 receipts, 3 articles per receipt).*
- Optional **external battery** connector.

* With segments display and backlight off. Load and range of rechargeable batteries can vary substantially depending on temperature, age and general state of batteries, printing frequency, networking, etc.

DIMENSIONS



- **Hanging stainless steel**, with receipt printer, label/receipt printer, or 2 printers: receipts + labels.



- **Self-service**, with label printer.



Versions (N° of Keys)

S-545	100
SELF-SERVICE	150
	208

PC Software

- Several **applications** are available, running on **Windows**, to connect **STAR SERIES** scales to PC:

RMS: Retail Management Software
DLD: Dibal Label Designer

- **RMS+DLD:** programming the scales, design labels/receipts (DLD) and **commercial management** of data received from scales (lists, invoices, warehouses, customers, offers, etc).

DFS: Dibal Friendly Software
DLD: Dibal Label Designer

- **DFS+DLD:** programming the scales, design labels/receipts (DLD) and reception of data with fully configurable lists. It stands out for its **ease of use, speed of communication and simultaneous connection with all scales.**

- Moreover, Dibal supplies **integration tools** running on Windows or Linux, to facilitate the integration with **customer's "Back-Office"**.

Web Server

- STAR SERIES** scales can incorporate **DIBAL WEB SERVER (DWS) embedded**, allowing access to each scale -through the IP address- from any computer or mobile device (smartphone, tablet,...) with web browser.

Access is protected by several levels of passwords.

- Thanks to **DWS**, many **parameters** of the scale can be remotely **checked and/or modified**:

- **Technical Service.** Consult and modification of technical parameters.
- **Sales Information.** Consult of total and detailed sales.
- **Information and Management.** "On-line" lists and modifications.

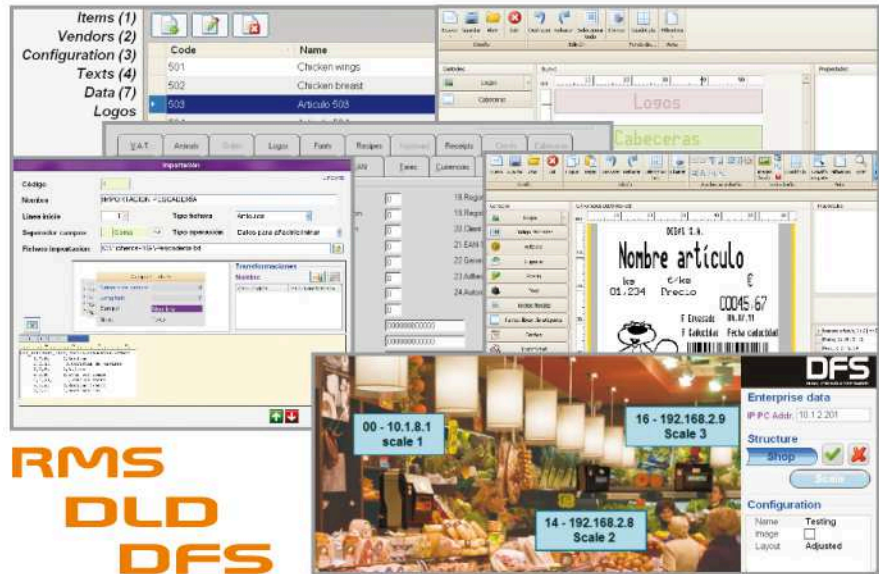


Table of Models

OPT. = Optional. * Using Shift and Vendor keys. ** Except for Hanging ABS format.

MODEL	FORMAT					DISPLAY			PLUs			MACROS (maximum dep. on model and format)	VENDORS	PRINTER		COMMUNICATIONS					BATTERY					
	FLAT (F)	POLE (P)	DOUBLE BODY (DB)	HANGING ABS (HA)	HANG. ST. STEEL (HS)	SELF-SERVICE (SS)	SEGMENTS LCD	GRAPHIC L LCD	GRAPHIC XL LCD	7" COLOUR TFT	TOTAL PLUs			DIRECT PLUs (maximum dep. on format)	PAPER TYPE	SPEED maximum (mm/second)	LINERLESS	INTER-CONNECTION (ETHERNET)* SCALES	ETHERNET TCP/IP	WI-FI IEEE 802.11		HOMEPLUG	SCANNER	CASH DRAWER	USB PORT	HIGH CAPACITY + EXTERNAL BAT. CONNECT.
S-540			•	•	•	•	OPT.	OPT.			10.000	60x2 + 19x2*	60	20	Receipt	100	16	•	OPT.	OPT.	•	•	•	•	OPT.**	
S-540 B			•				•	OPT.	OPT.		10.000	60x2 + 19x2*	60	20	Receipt	60	16	•	OPT.		•	•	•	•	OPT.**	
S-540 COLOUR			•	•				OPT.	OPT.	•	10.000	60x2 + 19x2*	60	20	Receipt	100	16	•	OPT.	OPT.	•	•	•	•	OPT.	
S-545	•	•	•	•	•	•	•	OPT.	OPT.		10.000	30x2 + 19x2* (F) 60x2 + 19x2* (HA, HS) 90x2 + 19x2* (P) 95x2 + 19x2* (DB) 100-150-208 (SS)	30 (F) 60 (HA, HS) 90 (P) 95 (DB) 100 (SS)	20	Label or Receipt (only Label in Self-service format)	100	OPT.	16	•	OPT.	OPT.	•	•	•	•	OPT.**
S-545 COLOUR	•	•	•					OPT.	OPT.	•	10.000	60x2 + 19x2* (HS) 90x2 + 19x2* (P) 95x2 + 19x2* (DB)	60 (HS) 90 (P) 95 (DB)	20	Label or Receipt	100	OPT.	16	•	OPT.	OPT.	•	•	•	OPT.	
S-547			•	•	•	•	•	OPT.	OPT.		10.000	60x2 + 19x2*	60	20	2 Printers: L & R	100	OPT.	16	•	OPT.	OPT.	•	•	•	OPT.**	
S-547 COLOUR			•	•				OPT.	OPT.	•	10.000	60x2 + 19x2*	60	20	2 Printers: L & R	100	OPT.	16	•	OPT.	OPT.	•	•	•	OPT.	