



X5 Pipeline: X-ray Inspection System

Designed for Food & Packaging Industries

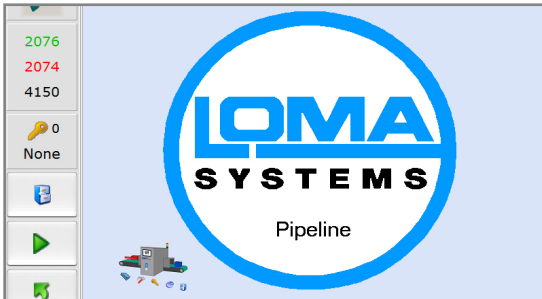
Product Highlights

- X-ray system designed for use in pipelines with a wide range of free flowing product
- Good detection of all metals, bone, glass and dense plastics
- 2.5" or 3" pipe diameters, to be used with a wide range of products
- Built for 24/7 operation with pass key Protective Set-up for added security and control
- Windows (WES) Industrial Grade PC with modem, Ethernet and Front Access USB Port
- Unique USB high speed, high stability, detector array with 0.4mm diode pitch



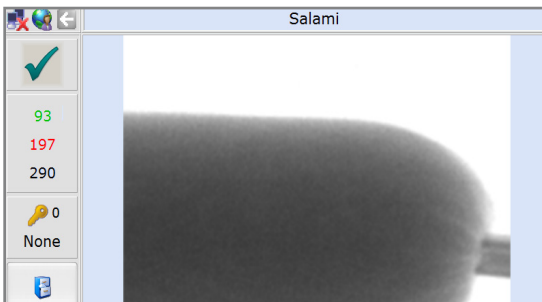
Excellent Detection Levels of Bone and also Metallic Contaminants

The X5 Pipeline offers great inspection capabilities on Bone as well as stainless steel, ceramic, glass and dense plastics.



Easy to Use Intuitive Full Color Touchscreen

The X5 Pipeline includes an Icon driven full colour touchscreen control interface with easy to use product learn and features and layout.



Data Logged Events and Images for Full Traceability

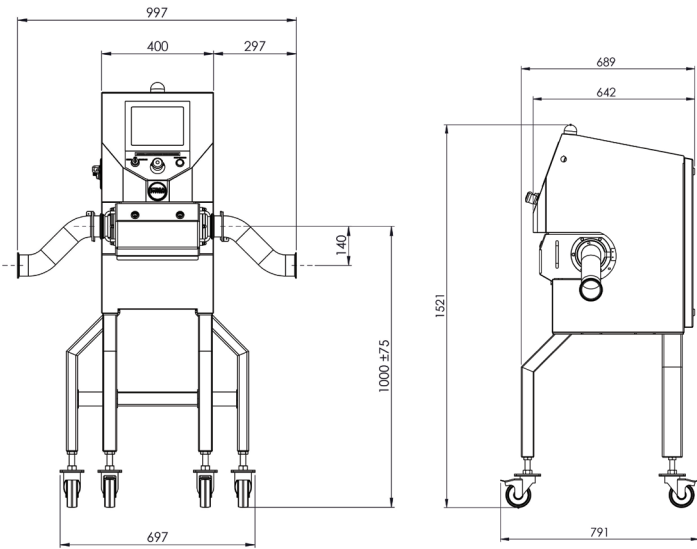
Date stamped reject images designed to help and comply with 21CFR Part 11 requirements are internally stored and can be removed via USB or Ethernet.



Environment Ready, IP69k Independently Rated

Fully IP69k rated and designed for harsh high-temperature, high-pressure wash-down environments with easy to clean components.

Technical Specification



Finish	304 Stainless Steel (Brushed)
System Length	400mm (Without Reject)
Line Height Option	750 800 850 900 950 1000 ±50 mm adjustment
Pipe Diameter	2.5" 3"
X-Ray Output	100W (50kV 2 mA)
IP Rating	IP69k
Power Requirements	230V AC, 50Hz or 110v AC 60Hz, Single Phase Mains
Cooling	Vortex Cooler (requires compressed air connection)
Operating Environment	10 to 35 °C (50 - 95 °F)
	0 to 10 °C (32 - 50 °F) with cabinet warm-up enabled
X-Ray Safety	Leakage less than 1 µSv/h
Reporting	Event, Batch, Shift
Data Retrieval	Via USB, Ethernet

Automatic Reject Options

The X5 Pipeline can be used with the following reject options:

- ARU Valve - Piston type device (includes Reject Confirmation Sensor)
- ARL Valve - Arc design typically Used for Most applications and suitable for whole muscle meat. (no reject confirmation)

Please consult LOMA for a better understanding of which reject is suitable for which application.



An ITW Company

Loma Systems is a registered trademark of Illinois Tool Works Inc. (ITW). Other names, logos, icons and marks identifying our products and services referenced herein are trademarks of ITW and may not be used without the prior written permission of ITW. Other product and company names listed are trademarks or trade names of their respective companies. Copyright © 2016 Illinois Tool Works Inc. All rights reserved. All of the specifications shown in this document are subject to change without notice.

www.loma.com

Tel: +44(0)1252 893300 (UK) | +1-800-872-LOMA (North America)

Metal Detection | Checkweighing | X-Ray Inspection

In association with



X5PIPE_893201711