

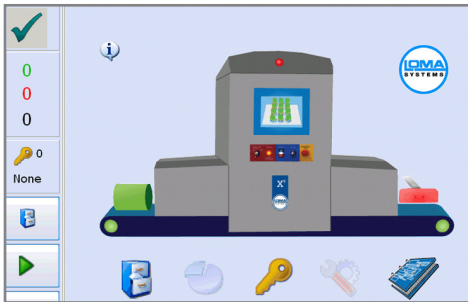


X⁴ - Bulk Flow X-ray Inspection System

Designed for Food & Packaging Industries

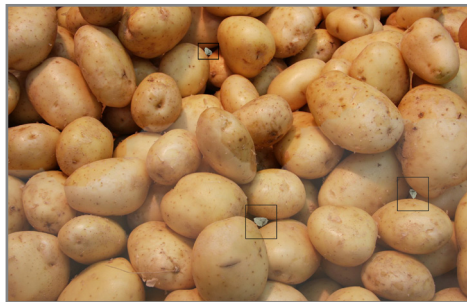
Product Highlights

- X-Ray system designed for use with a wide range of loose free flowing products
- Good detection of all metals, bone, glass and dense plastics
- Built for 24/7 operation with pass key Protective Set-up for added security and control
- Windows (WES) Industrial Grade PC with modem, Ethernet and Front Access USB Port
- Unique USB high speed, high stability, detector array with 0.8mm diode pitch
- Computer vision system utilising image processing and morphological techniques



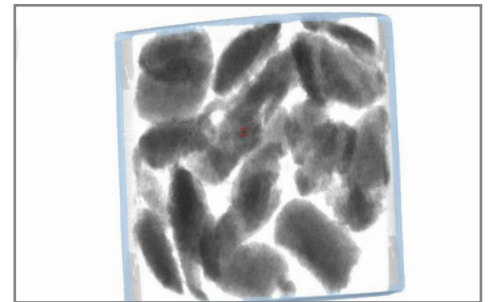
Easy to Use Intuitive Full Colour Touchscreen

The X⁵ Spacesaver includes an Icon driven full colour touchscreen control interface including multi-level password access and data logged events for traceability (designed to comply with CFR21 Part 11 requirements)



Detection of both Metallic and Non-Metallic Contaminants

The X⁴ Bulkflow offers great detection levels on stainless steel, ceramic, bone, glass and dense plastics in loose free flowing product.

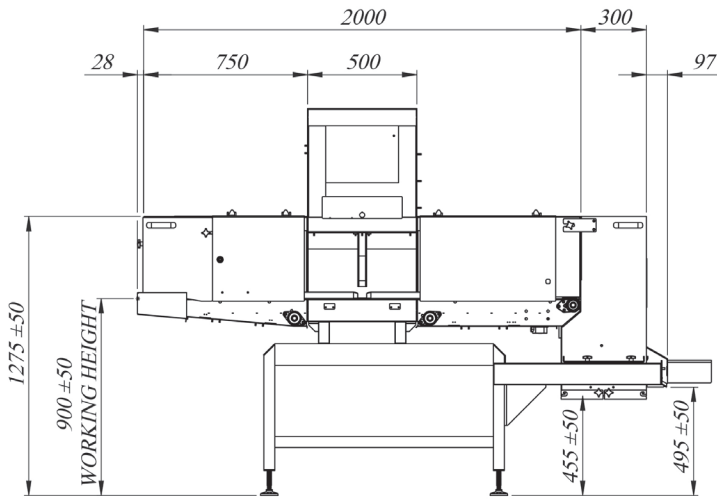
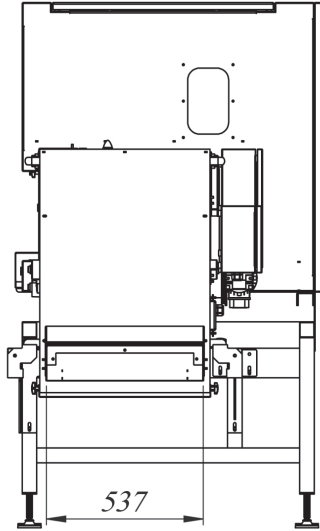


Data Logged Events and Images for Full Traceability

Date stamped reject images designed to comply with CFR21 Part 11 requirements are internally stored and can be removed via USB or Ethernet.



Technical Specification



All dimensions in mm

Finish	304 Brushed Stainless Steel		
System Length	2500mm		
Line Height	900mm +/- 50mm		
Product Height (recommended maximum)	40mm		
Product Width (recommended maximum)	300	500	600
	200mm	400mm	500mm
X-Ray Output	150W (60kV 2.5mA)		
IP Rating	IP55		
Belt Width	300,500,600mm		
Belt Type	Pu Belt		
Speed Range	Up to 60m/min		
Power Requirements	230V AC, 50Hz or 110v AC 60Hz, Single Phase Mains		
Cooling	Vortex or AC Air Conditioning		
Operating Environment	10 to 30°C Vortex >30°C + AC Air Conditioning		
X-Ray Safety	Leakage less than 1 µSv/h		
Reporting	Event, Batch, Shift		
Data Retrieval	Via USB, Ethernet, Enet		

Automatic Reject Options

The X⁴BulkFlow can be used with the following reject options:

- Single or Multilane lift or Drop Flap



An ITW Company

Loma Systems is a registered trademark of Illinois Tool Works Inc. (ITW). Other names, logos, icons and marks identifying our products and services referenced herein are trademarks of ITW and may not be used without the prior written permission of ITW. Other product and company names listed are trademarks or trade names of their respective companies. Copyright © 2016 Illinois Tool Works Inc. All rights reserved. All of the specifications shown in this document are subject to change without notice.

www.loma.com

Tel: +44(0)1252 893300 (UK) | +1-800-872-LOMA (North America)

Metal Detection | Checkweighing | X-Ray Inspection

In association with



X4PIPE_893201612